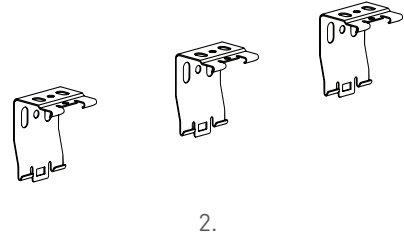
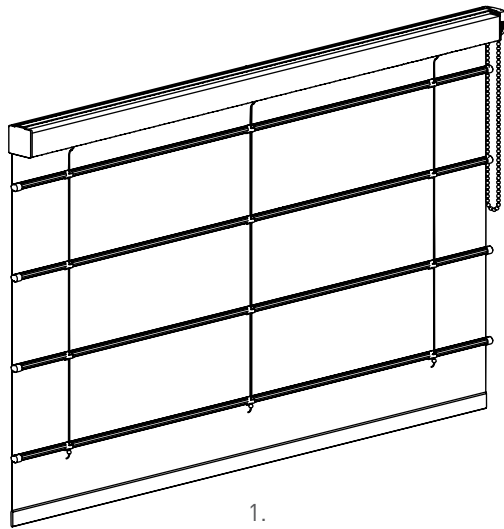


SECTION A | ITEMS REQUIRED

LOW PROFILE MOUNTING CLIPS



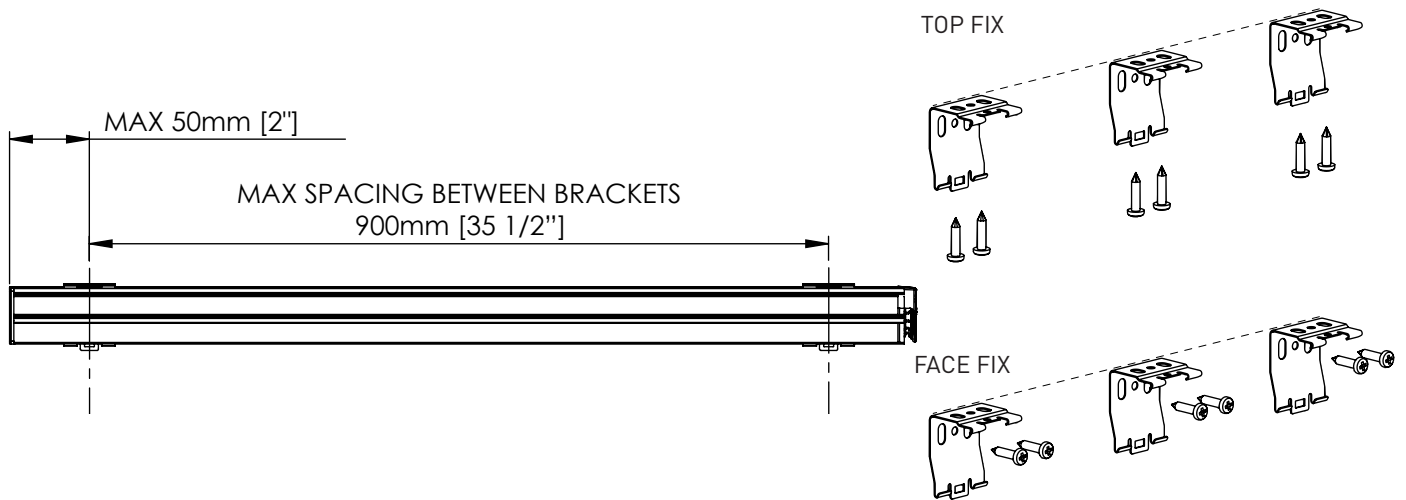
SYSTEM INDEX

1. Assembled Roman Shade 2.
Low Profile Mounting Clips

SECTION B | INSTALLATION

INSTALLATION - LOW PROFILE MOUNTING CLIPS

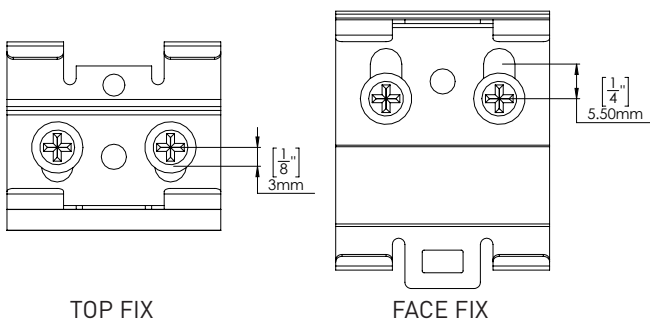
ATTACH MOUNTING CLIPS TO WALL/CEILING



ADJUST AS REQUIRED

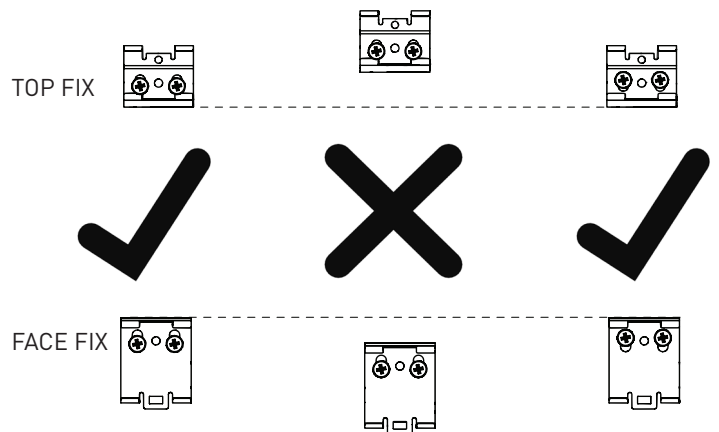
Slight adjustment is available:

LOW PROFILE MOUNTING CLIP



ENSURE STRAIGHT ALIGNMENT

Ensure mounting clips are in line

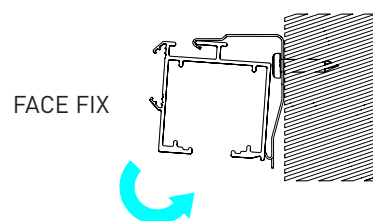
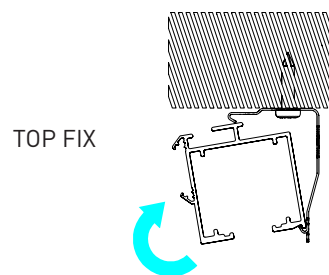
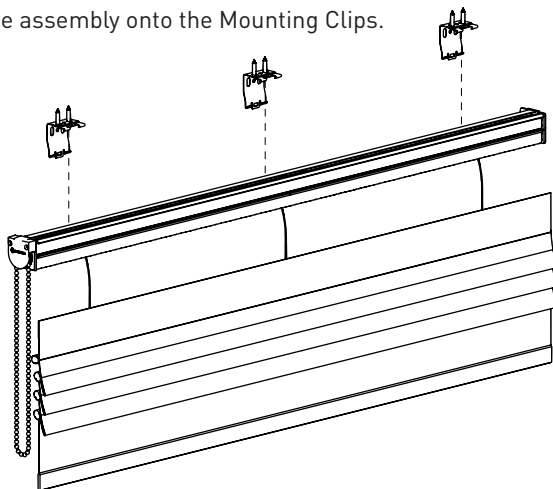


SECTION B | INSTALLATION

INSTALLATION - LOW PROFILE MOUNTING CLIPS

ATTACH HEAD RAIL TO MOUNTING CLIPS

Mount the shade assembly onto the Mounting Clips.



NOTE: Top Fix shown as example. Also applies to Face Fix.

ATTACH HEAD RAIL TO MOUNTING CLIPS (COMPLETE)

